



APPROVED FOR PUBLIC RELEASE

## Application Summary

---

### The King Rocks Wind Farm

This application is for the construction and operation of the King Rocks Wind Farm (**KRWF**), a proposed 103MW wind farm located approximately 35 kilometres north-east of the Hyden Townsite in the Shire of Kondinin in the Mid West Region of Western Australia. The KRWF would connect into the existing 132kV power transmission line that crosses the proposed site, providing connection into the South West Interconnected System (**SWIS**).

The coordinates of the centre of the wind farm site are located at: 32°14'56.17"S latitude 119°11'16.24".

The Applicant for the Generation Licence is **Electricity Generation and Retail Corporation** trading as Synergy (**Synergy**). Synergy is a 100% Western Australian Government owned Government Trading Enterprise (**GTE**) that is the State's leading energy generator and retailer.

Synergy owns and operates nine power stations in Western Australia and has a 19.9% interest in the Bright Energy Investments (BEI) wind farms at Warradarge, Albany and Grasmere, and the solar farm at Greenough River. It also provides asset management services to the BEI renewable generation facilities.

### Proposed Licenced Services

The licensed services will include electricity generation only. Power generated by the KRWF will all be transferred internally to Synergy's wholesale business unit for sale into the Western Australian energy market for the life of the facility.

### Description of the Service Infrastructure/Works

The works involve the construction of a 103MW wind farm consisting of 17 wind turbine generators. The exact turbine tower locations are still being finalised, however they will be largely distributed over the ridge lines on the lots within the licence area (bounded in yellow) in Figure A below. Figure A also shows the approximate turbine locations and the substation location for interconnection to the existing 132kV power transmission line. The 132kV transmission line, which forms part of the South West Interconnect System (**SWIS**), is owned by Western Power. Western Power will also own the connection between the wind farm's substation and the transmission line.

Turbine hub heights will be up to 125m above ground level and the maximum blade tip height will be 205m.

In addition to the wind turbine generators, there will be supporting ancillary equipment including local power reticulation, a high voltage transformer and associated protection equipment, all located on the licence area.

### Funding the Proposed Development

Synergy will fund the construction of the KRWF off the company's balance sheet following equity investment from the Western Australian government as part of its decarbonisation initiatives.

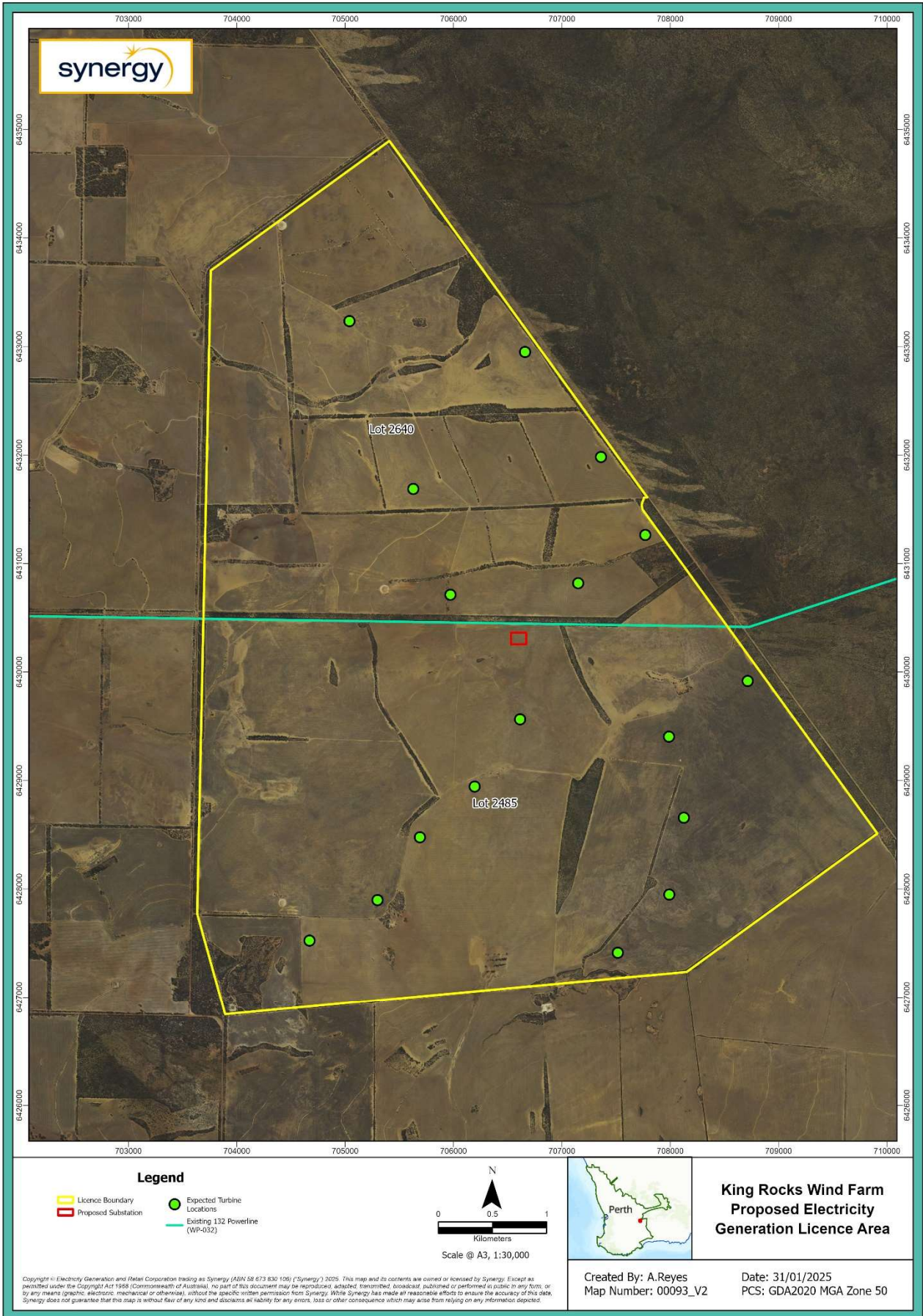


Figure A – KRWF Site

## Regulatory Approvals

Development Approval for the KRWF has been granted for up to 30 wind turbine towers (17 in the current proposal). The Development Approval was granted in 2022.

Turbines are being sited on previously cleared land wherever possible to minimise the need to clear remnant vegetation. The KRWF licence area has been surveyed for Aboriginal heritage, flora and fauna as part of the Development Approval process. Certain construction related approvals will be required prior to the commencement of the construction phase in mid 2025.

An Electricity Transfer and Access Contract and an Interconnection Works Contract have been executed with Western Power to connect the KRWF into the SWIS.

Construction on site is currently scheduled to commence during the second quarter of 2025, with first power generated in the second half of 2026. Commissioning is planned to be complete in the first quarter of 2027.

## Public Interest Information

A Community and Stakeholder Engagement Strategy was implemented that outlines a variety of activities intended to keep all stakeholders and community members updated on the various project phases. A number of community information sessions have been undertaken in addition to project updates with the local Shire and regular engagement with landowners. Feedback has been positive and communication channels have been established so the community and stakeholders can access information and Synergy personnel, should they have any questions or require further details.

The wind farm is located in a traditional cropping/farming area. The windfarm itself will have very limited impacts on the farming activities on the land once construction is complete.

Given the low potential conflict with current land uses, the sparsely populated locality and the low overall environmental impact of the wind farm once in operation, it is considered that the project will have a significant net public interest benefit based on the 103MW of renewable power generation capacity that will be added to the SWIS.