

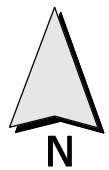
The Licence Area as shown in this map is the approximate boundary of the Electricity Retail Corporation and coincides with the Electricity Networks Corporation Distribution Licence Area Boundary.

LEGEND

Local Government Boundary

6kV Distribution Lines 22kV 12.7kV 22kV Distribution Lines
 11kV Distribution Lines 33kV 19.1kV 33kV Distribution Lines

DATE	No.	DESCRIPTION	DRN	CHK	APR



APPROVED:

CHAIRMAN
ECONOMIC REGULATION AUTHORITY

DATE:

ELECTRICITY INDUSTRY ACT 2004
SOUTH WEST INTERCONNECTED SYSTEM ELECTRICITY LICENCE AREA
RETAIL
LICENSEE: Electricity Retail Corporation

DRAWN Western Power Corporation	CHECKED	APPROVED	PLAN No. ERA-EL-073	ISSUE	ORG SIZE A3
FILE No. DMS*2833031	SCALE	DATE			