

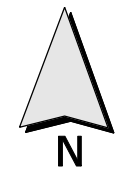
The Licence Area as shown in this map is the approximate boundary of the Electricity Networks Corporation's Distribution System. The boundary is determined by the extremities of the Interconnected Network owned by Western Power. Any Person who would like a copy of the map which shows the location of the actual infrastructure within the boundary as at the request date, should contact Western Power directly who will supply them with a map within 2 weeks of the request.

LEGEND

Local Government Boundary

6kV Distribution Lines 22kV 12.7kV 22kV Distribution Lines
 11kV Distribution Lines 33kV 19.1kV 33kV Distribution Lines

DATE	No.	DESCRIPTION	DRN	CHK	APR



APPROVED:

CHAIRMAN
ECONOMIC REGULATION AUTHORITY

DATE:

ELECTRICITY INDUSTRY ACT 2004
SOUTH WEST INTERCONNECTED SYSTEM ELECTRICITY LICENCE AREA
DISTRIBUTION
LICENSEE: Electricity Networks Corporation

DRAWN Western Power Corporation	CHECKED	APPROVED	PLAN No. ERA-EL-072	ISSUE	ORG SIZE A3
FILE No. DMS*2833063	SCALE	DATE			