

KARARA

MINING LTD

A Joint Venture Between Gindalbie Metals and AnSteel Group

Level 8, London House Telephone +61 8 6298 1888
216 St Georges Terrace Facsimile +61 8 6298 1099
Perth WA 6000 ABN 68 070 871 831

9 December 2010

Mr Lyndon Rowe
Chairman
Economic Regulation Authority
Level 6, Governor Stirling Tower
PERTH WA 6000

Attention: Mick Geaney, Assistant Director, Licensing

Amendment to Karara Power Pty Ltd Transmission Licence

I refer to the Transmission Licence granted to Karara Power Pty Ltd by the Economic Regulation Authority on 27 October 2010.

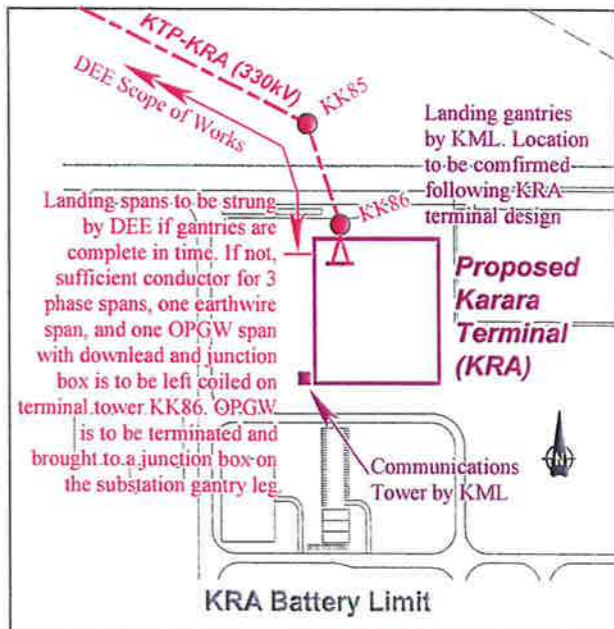
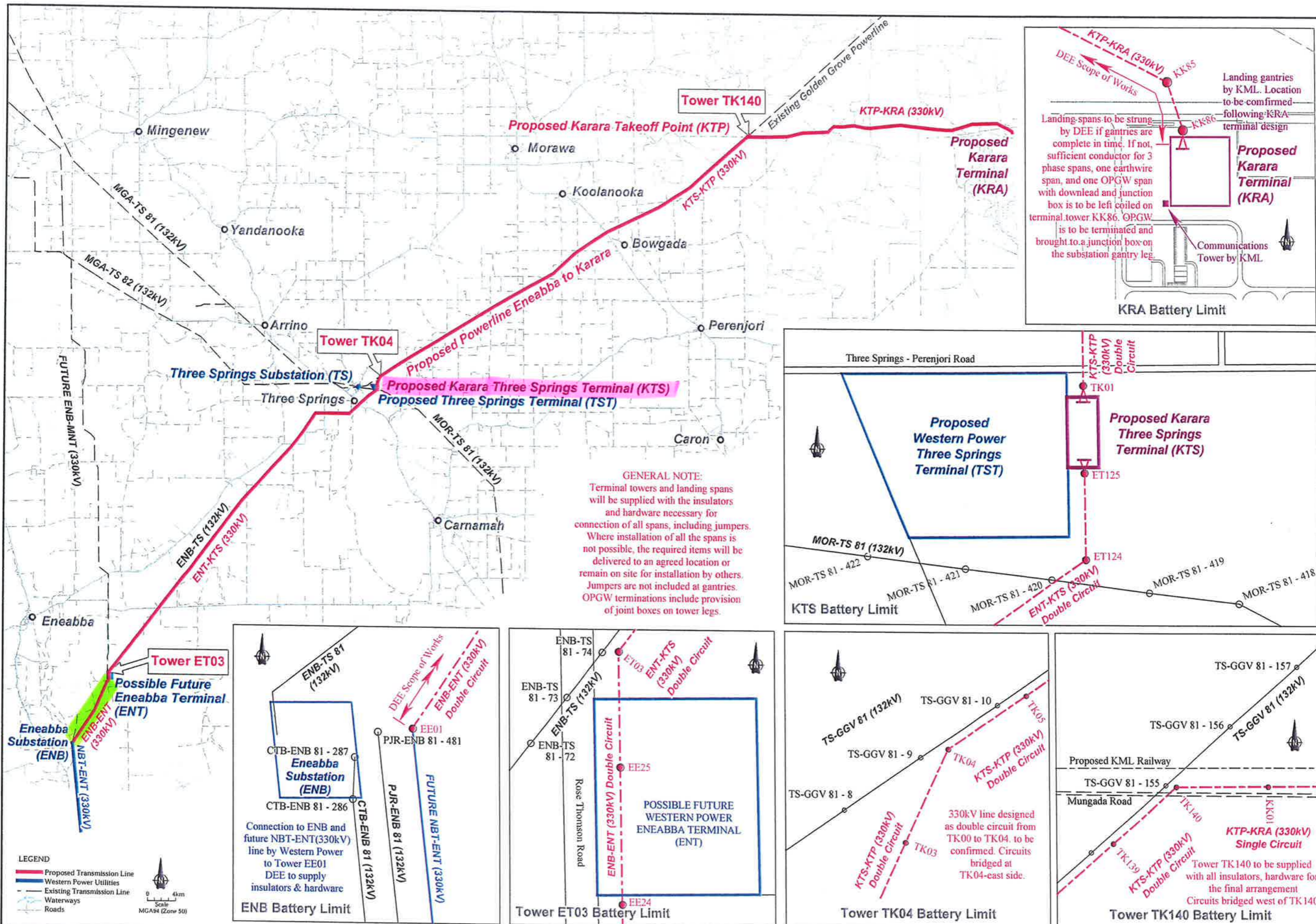
Karara Power Pty Ltd now seeks to amend its Transmission Licence to include the construction, operation and maintenance of:

- (1) a further approximately 13 kilometres of 330Kv Transmission Line from the southern portion of Karara's Transmission Line (at Western Power's "possible Future Eneabba Terminal)(ENT)" to Western Power's Eneabba Substation (ENB)(as highlighted in green on the attached map); and
- (2) a substation at Three Springs (KTS)(as per attached scope and as highlighted in pink on the attached map).

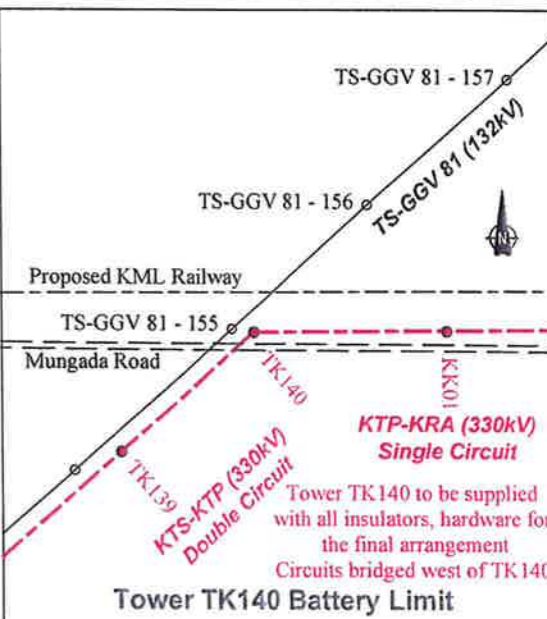
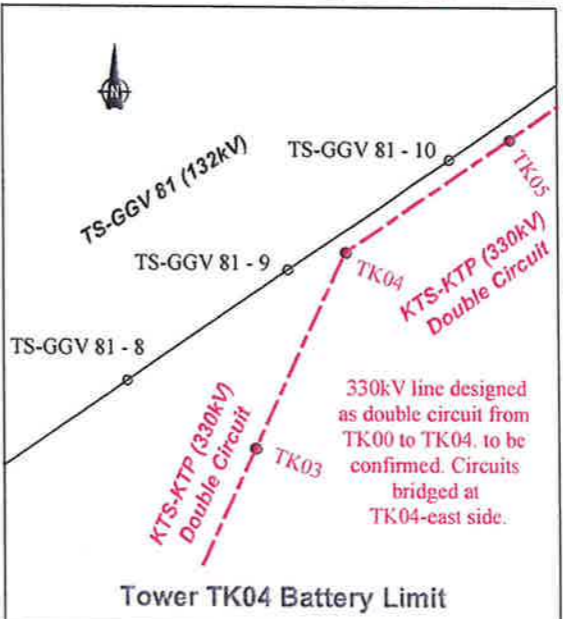
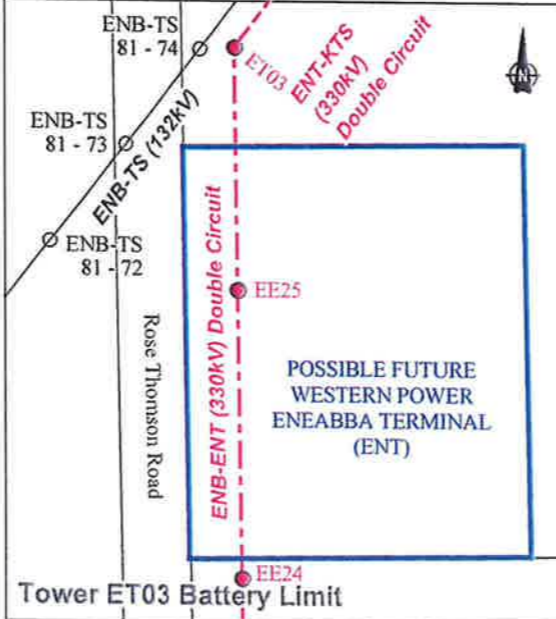
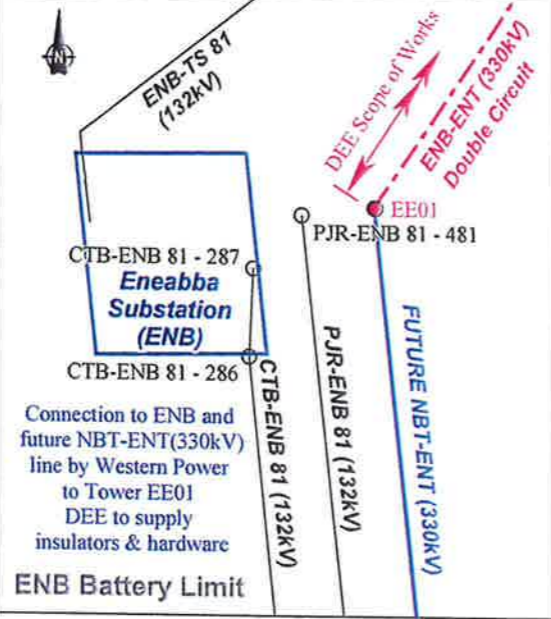
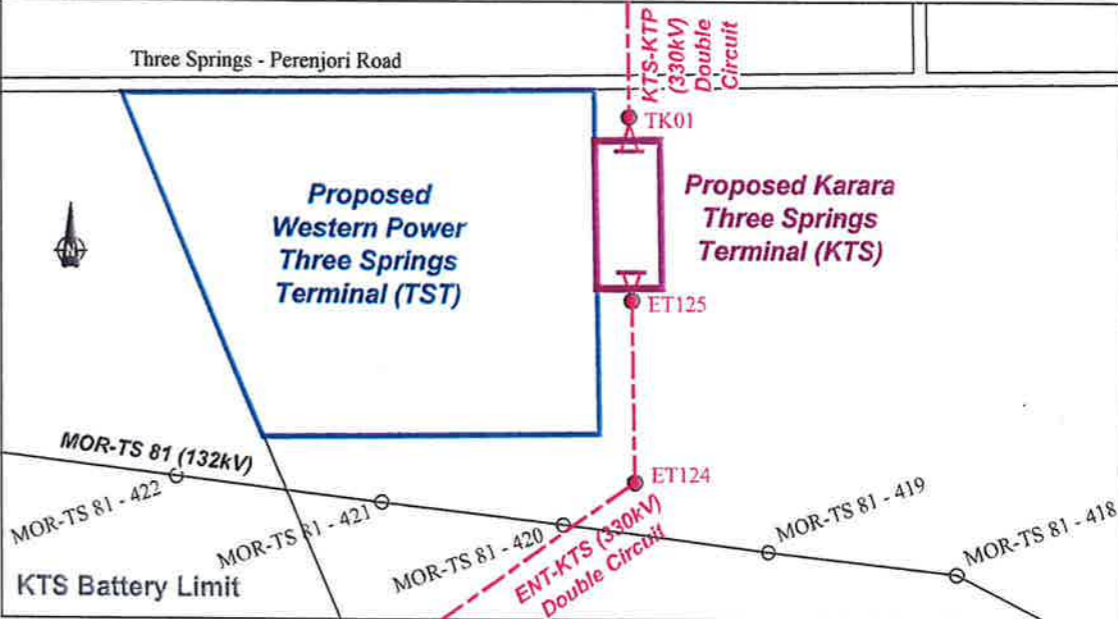
Please do not hesitate to contact me on 6298 1002 or Cressey Wallwork on 6298 1017 if you wish to discuss or if you require further information.

Yours sincerely
KARARA MINING LTD

AIDAN KELLY
Chief Advisor Project Approvals



GENERAL NOTE:
Terminal towers and landing spans will be supplied with the insulators and hardware necessary for connection of all spans, including jumpers. Where installation of all the spans is not possible, the required items will be delivered to an agreed location or remain on site for installation by others. Jumpers are not included at gantries. OPGW terminations include provision of joint boxes on tower legs.



LEGEND
 - Proposed Transmission Line
 - Western Power Utilities
 - Existing Transmission Line
 - Waterways
 - Roads

Notes:
 Topography - Landgate
 DEE Scope of Works shown in red
 Western Power Scope of Works shown in blue
 KML Scope of Works shown in purple

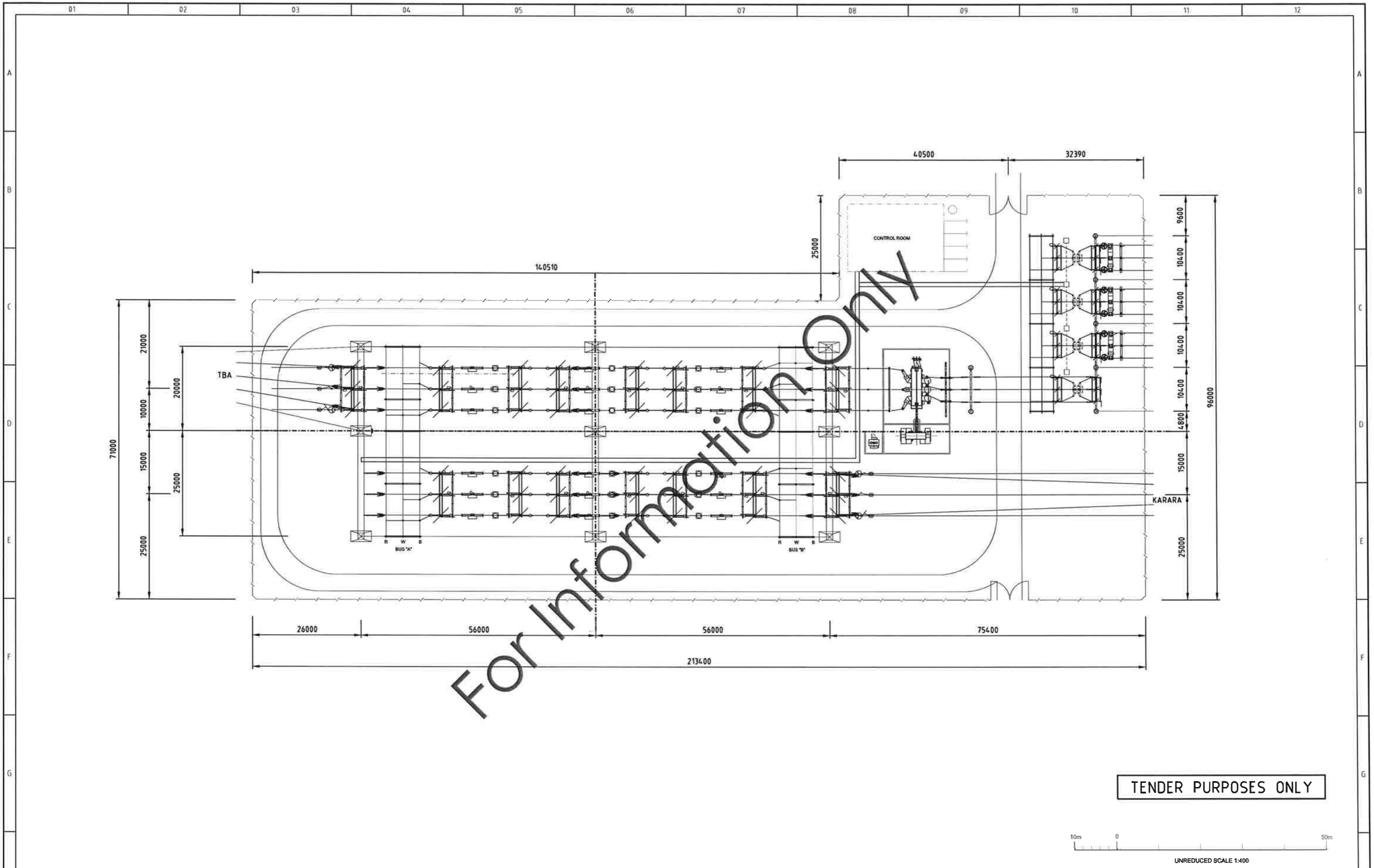
Indicative section lengths, subject to final design
 ENB (EE1) to ENT (ET03) - 11.70km
 ENT (ET03) to KTS - 58.70km
 KTS to KTP (TK140) - 65.64km
 KTP (TK140) to KRA - 39.93km

Author: F Ritky Date: Nov 2010 Scale: as shown
 Drawn: CAD Resources ~ www.cadresources.com.au
 Tel: (08) 9246 3242 ~ Fax: (08) 9246 3202
 CAD Ref: g1327_cf25.dgn Rev: E A3



PROPOSED ENEABBA TO KARARA 330KV TRANSMISSION LINE
BATTERY LIMITS
 as at 18 November 2010

Figure: **1**



For Information Only

TENDER PURPOSES ONLY



REV	ISSUED FOR TENDER	JT	DR	CHK	APP	DATE
A	ISSUED FOR TENDER					17.11.09
REVISION DETAILS						

DownerEDi Engineering

Level 2, Building B, 480 Victoria Road Gladesville,
NSW Australia 2111
T: 61 (02) 9879 8400 F: 61 (02) 9878 7221
ABN: 53 000 983 700
www.downerediengineering.com

NAME	DATE
DRAWN	
CHECKED	
APPROVED	

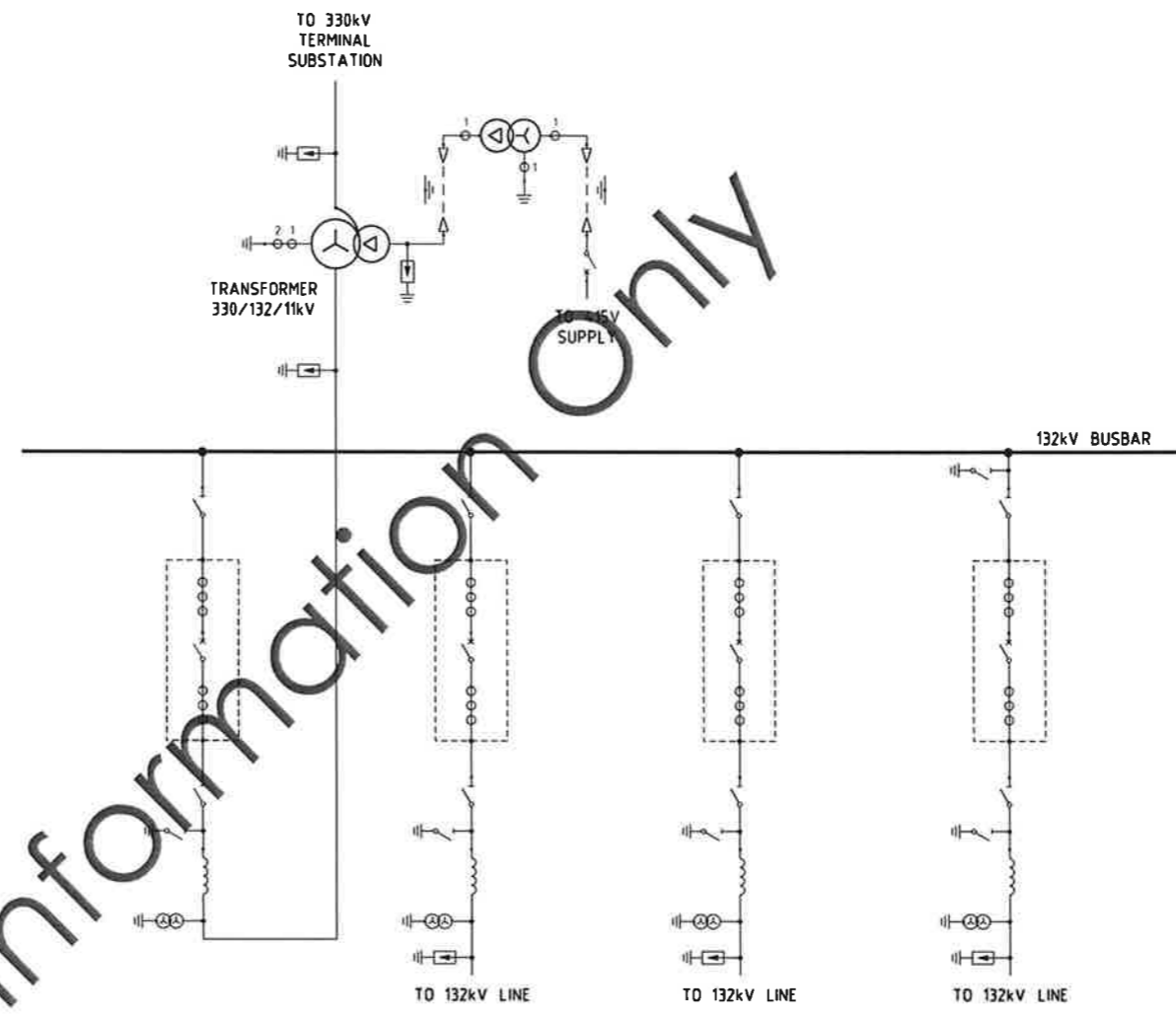
**THREE SPRINGS TERMINAL STATION
330kV-132kV SWITCHYARDS
GENERAL ARRANGEMENT**

SCALE	SIZE	DRAWING NUMBER	REV
1:400	A1	SK01	A

NOTES:

1. SWITCHYARD LINE PHASING SUBJECT TO CONFIRMATION
2. REQUIREMENT & PHASING OF 132kV LINE TRAP SUBJECT TO CONFIRMATION
3. 132kV LINE & TRANSFORMER BAY RATING = 1250A, 31.5kA/1s
4. 132kV BUSBAR RATING = 2500A, 31.5kA/1s

For Information Only

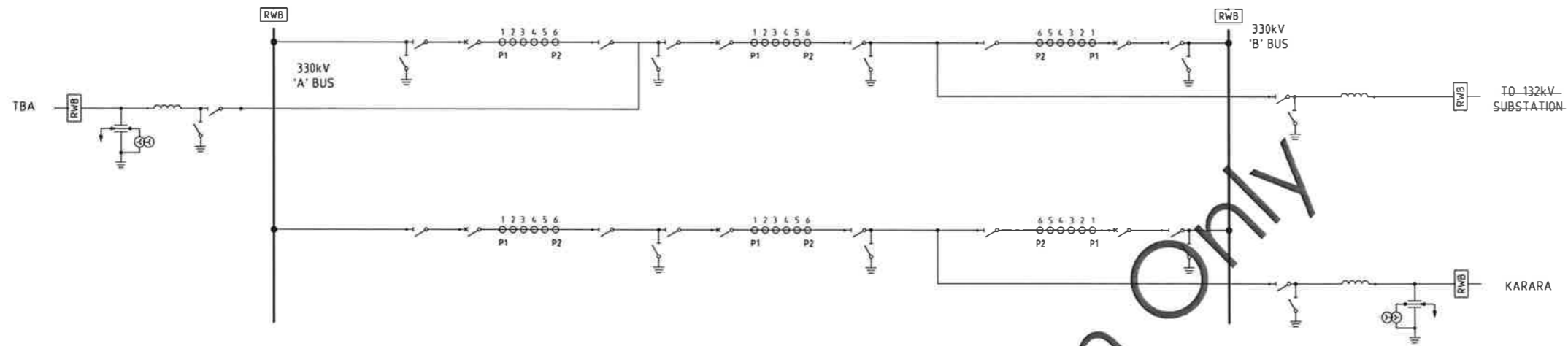


TENDER PURPOSES ONLY

A ISSUED FOR TENDER			JT	DR	17.11.09						
REVISION DETAILS			DRN	DSN	CHK	APP	DATE				
01	02	03	04	05	06	07	08	09	10	11	12
DownerEDi Engineering Level 2, Building B, 480 Victoria Road Gladsville, NSW Australia 2111 T: 61 (02) 9879 8400 F: 61 (02) 9878 7221 ABN: 53 000 983 700 www.downerediengineering.com						REFERENCE DRAWINGS		NAME DATE		THREE SPRINGS TERMINAL STATION 330kV-132kV SUBSTATION 132kV SINGLE LINE DIAGRAM	
NTS		A1		SK02		A					
SCALE		SIZE		DRAWING NUMBER		REV					

NOTES:

1. SWITCHYARD LINE PHASING SUBJECT TO CONFIRMATION
2. REQUIREMENT & PHASING OF 330kV LINE TRAP SUBJECT TO CONFIRMATION
3. 330kV LINE & TRANSFORMER BAY RATING = 1250A, 31.5kA/1s
4. 330kV BUSBAR RATING = 2500A, 31.5kA/1s



TENDER PURPOSES ONLY

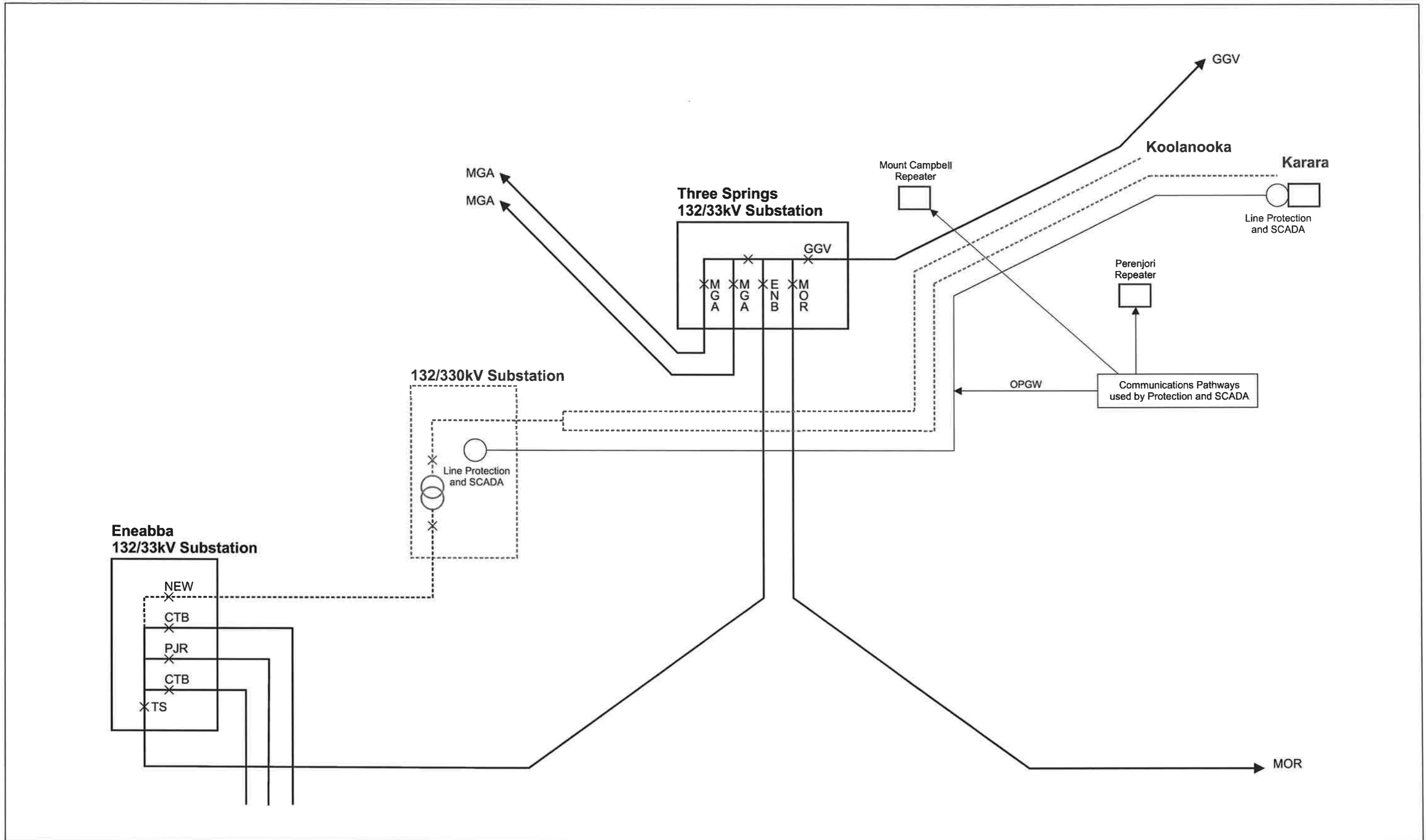
REV	ISSUED FOR TENDER	DRN	DSN	CHK	APP	DATE
A	ISSUED FOR TENDER	JT	DR			19.11.09
REVISION DETAILS						

DownerEDI Engineering
 Level 2, Building B, 480 Victoria Road Gladesville,
 NSW Australia 2111
 T: 61 (02) 9878 8400 F: 61 (02) 9878 7221
 ABN: 53 000 983 700
 www.downerediengineering.com

NAME	DATE
DRAWN	
CHECKED	
APPROVED	

SCALE	SIZE	DRAWING NUMBER	REV
NTS	A1	SK03	A

THREE SPRINGS TERMINAL STATION
 330kV-132kV SUBSTATION
 330kV SINGLE LINE DIAGRAM



Karara Iron Ore Project - 330kV Power Transmission Line
Design Responsibility Overview

15th November 2010

KARARA
 MINING LTD

TS-CON-Power Transmission Responsibility-DB-15Nov2010